

HYDRAULIC LIFTS

OMEGA

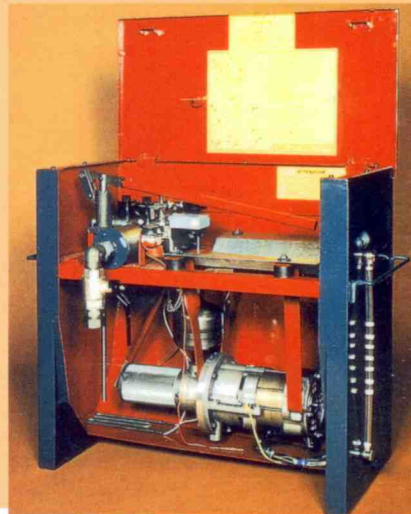
EXTENSIVE RANGE & PERFORMANCE

- The new range for Omega elevators are directed towards all applications including old buildings, new buildings, hotels, hospitals, offices and goods lifts.
- Ideal for low rise environments.
- Minimal wall loadings.
- Ideally suited for up to five stops.
- Low energy requirements as lift descends under its own weight.
- Tried and tested hydraulic with 100.000 units in operation worldwide.
- Various options for location of motor room.
- Can be utilised in many different environments.
- We are specialist in special elevators.

SILENT AND SMOOTH DRIVE



- Omega use "Moris" hydraulics, manufactured in our own factory in Vitoria, Spain.
- Quality of workmanship coupled with experience.
- Sophisticated valve block for total passenger comfort.
- The telescopic pistons are of high quality and low resistance giving the lift a longer life and lower maintenance costs.
- Proven technology- lifts over 35 years old still working perfectly.



ELECTRONICALLY CONTROLLED MOVEMENT

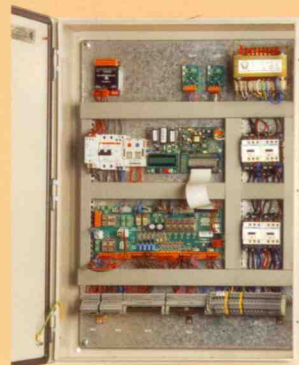
- Selective control allows free flowing passenger movement.
- Multiplex grouping possibilities.
- Automatic emergency release system in case of power failure.
- Permanent link to office via built in hands free telephone link.
- Control system can be located in shaft or in stand alone cabinet.
- Complies with all the existing european regulations.
- Able to comply with most client specifications.



HEAD OFFICE:

 **Omega Elevator, s.a.**

8 Bridgegate Centre, Martinfield,
Welwyn Garden City, AL7 1JG
Tel: (01707) 334962
Fax (01707) 376594
Web: www.omegaelevator.com
E-mail: omegaelevator@omegaelevator.com



Offices:

NATIONAL ALICANTE, BIZKAIA, BURGOS, CORDOBA, GIPUZKOA, LA RIOJA,
IN SPAIN: LAS PALMAS, MIRANDA, MURCIA, NAVARRA, TENERIFE, VITORIA.

INTERNATIONAL: ALGERIA, ARGENTINA, BOLIVIA, DENMARK, DOMINICAN REPUBLIC,
FRANCE, IRELAND, ITALY, MOROCCO, POLAND, PORTUGAL,
UNITED KINGDOM,